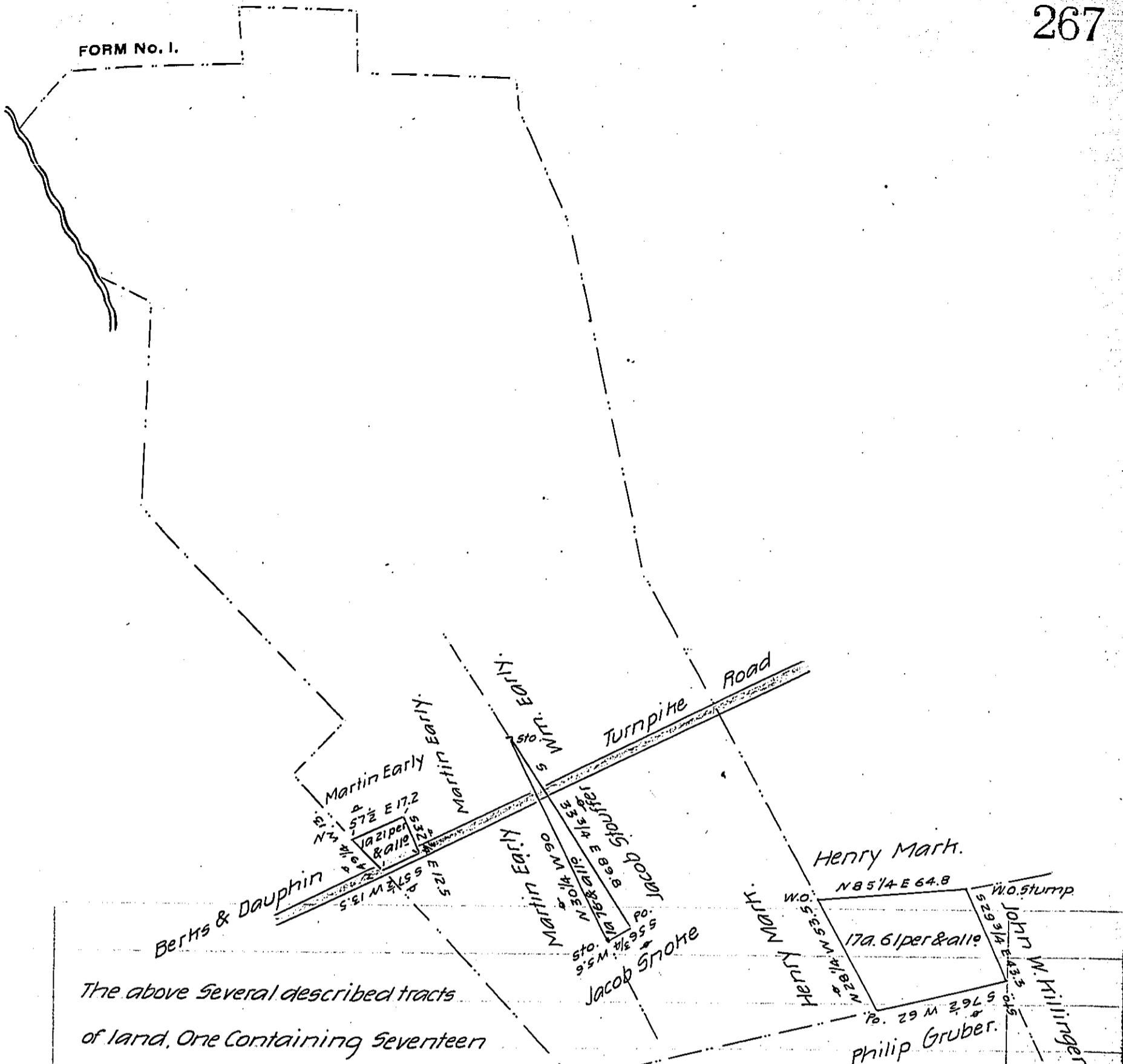


FORM No. 1.



The above Several described tracts of land, One Containing Seventeen acres Sixty one perches and allowance, One Containing One acre Seventy six perches and allowance, and one Containing One acre twenty one perches and allowance. Containing together nineteen acres, one hundred and fifty eight perches and allowance.... Being parts of a larger tract of land of five hundred and fifty acres and a quarter & allowance. Originally Surveyed on Warrant dated the 17th day of December A.D. 1745 to John Over. Now Situate in Londonderry township Lebanon County. The above parts Surveyed April the 15th A.D. 1870. To Henry Mark, Jacob Stouffer and others. By Tho^s Kramer for Henry C. Grettinger Esq.

To J. M. Campbell Esq. Dept Sur^r of Lebanon Co. Surveyor General of Penna. Approved and accepted June 3rd 1870. Henry C. Grettinger C.S.

IN TESTIMONY that the above is a copy of the original remaining on file in the Department of Internal Affairs of Pennsylvania, made conformably to an Act of Assembly approved the 16th day of February, 1833, I have hereunto set my Hand and caused the Seal of said Department to be affixed at Harrisburg, this thirteenth day of June 1906.

Isaac D. Brown
Secretary of Internal Affairs.